

Greater Erie Community Action Committee (GECAC) Head Start

Annual Report
2007-2008





Program

Overview

Head Start is a *comprehensive child development program* that serves children from ages 3 to 5 and their families. The Head Start Program has a tradition of delivering high quality services that foster healthy development in low-income children with the overall goal of increasing children's ability to effectively deal with their present environment and later responsibilities in life and school.

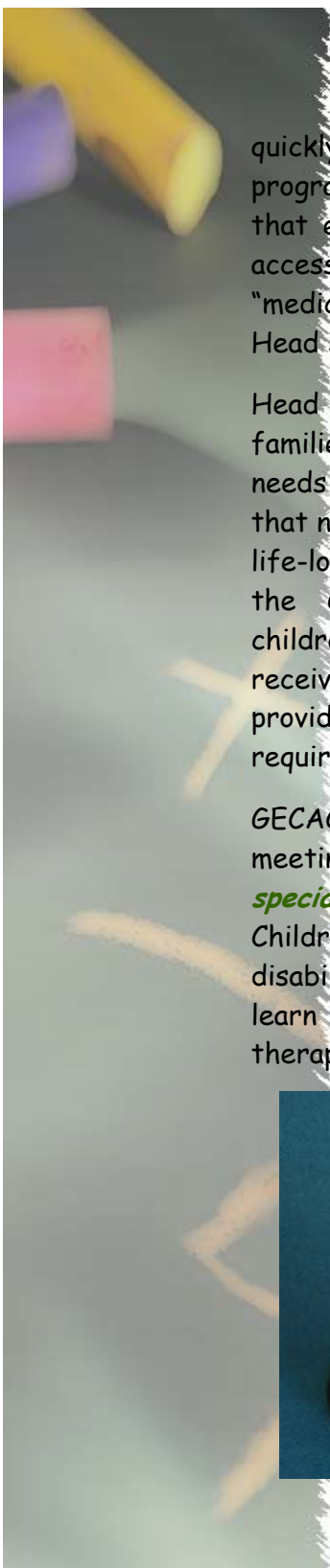
The success of Head Start has been the program's ability to *impact all facets of a child's life*: education and early childhood development, health and safety, nutrition, mental health, family involvement and community partnerships.



The *Education and Early Childhood Development* component utilizes an integrated curriculum. The High Scope Framework provides the daily structure and routine supported by elements of the Creative Curriculum. Opening the World of Learning Pre-K, an early literacy curriculum, provides the foundation for our instructional program *balancing child-initiated with teacher-directed* activities encompassing all domains of learning: Language and Literacy, Mathematics, Science and Social Studies, The Arts, Physical Development, and Social and Emotional Development. Children are supported and guided through their *active learning experiences* in a manner appropriate to their age and stage of development. All children are *transitioned* to public or private school systems with the transition materials developed in collaboration with local school superintendents through Success by Six, the Early Care and Education Initiative for Erie County.

Head Start promotes preventative *health services*, early intervention and primary health care to ensure that health problems are

***Parents are the First and
Primary Educators of their
Children***



quickly identified and addressed. The program also works with the family to ensure that each child has a source of continuous, accessible coordinated care that serves as a “medical home” that will continue beyond the Head Start enrollment.

Head Start's child *nutrition* services assist families in meeting each child's nutrition needs and in establishing good eating habits that nurture health development and promote life-long wellbeing. Through participation in the Child and Adult Feeding Program, children attending a Head Start center receive a nutritious meal and snack that provide at least 1/3 of the daily nutritional requirement.

GECAC Head Start has been a pioneer in meeting the needs of preschool children with *special needs* in a mainstream setting. Children with physical, emotional and learning disabilities, and their non-disabled peers, learn from one another and from teachers, therapists and parents. The program works

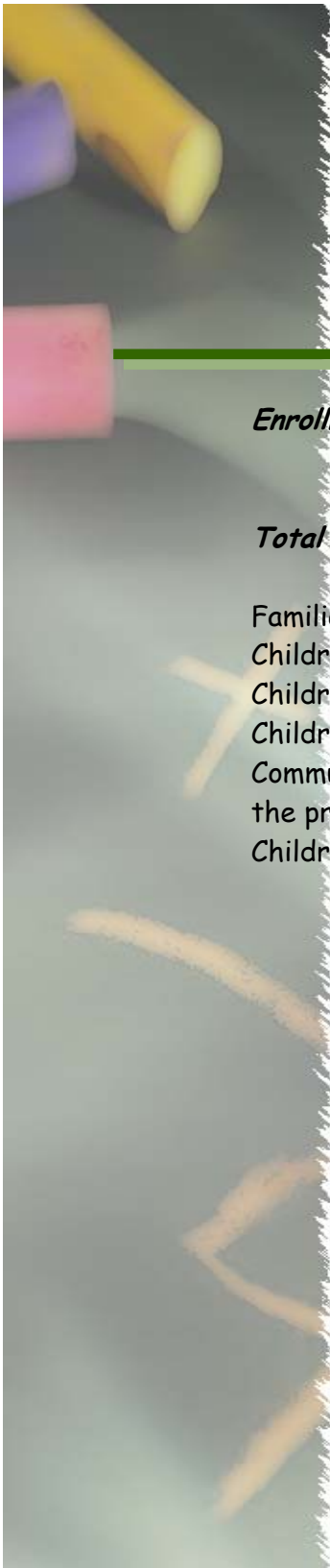


collaboratively with the Local Education Agencies to develop and implement individual education plans for children diagnosed with a disability.

Head Start services are *family centered* based on the belief that children develop in the context of their family and culture and that parents are respected as the primary educators and nurturers of their children. Head Start offers parents opportunities and support for their personal growth. Services are designed to support parents as they identify and meet their own goals, nurture the development of their children and advocate for themselves and their family.

To promote the highest level of services to children and families, the program relies on its *community partnerships*. Churches, schools, community centers and the Housing Authority of the City of Erie provide space for 45 center-based classrooms in part day/part year and full day/full year classes, 7 home-based group experience sessions, and meeting rooms for parent activities at 16 centers throughout Erie and Erie County.

***Did you Know that 90% of all
Head Start families have
initiated the goal setting process?***



Head Start

Facts

Enrollment:

Federal Slots..... 823

State Slots.....60

Total Enrollment..... 883

Families receiving Social Services..... 828

Children receiving Physical Exams..844 (95%)

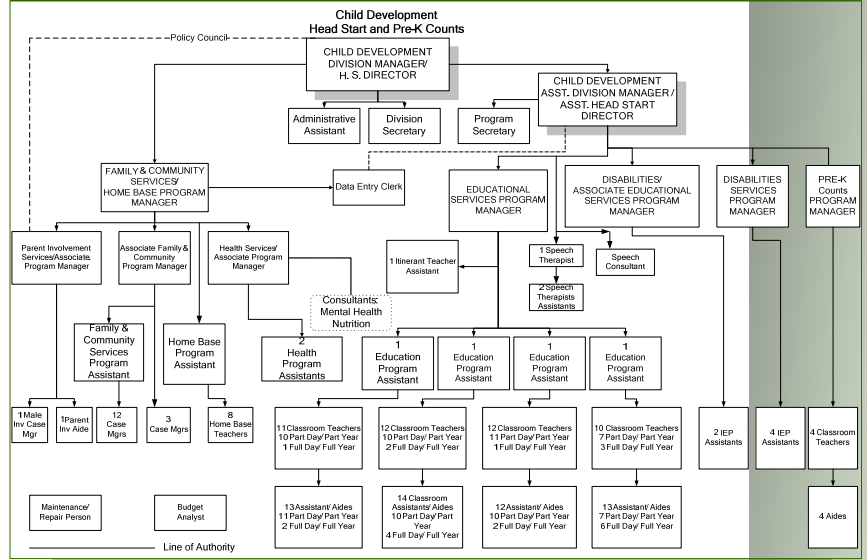
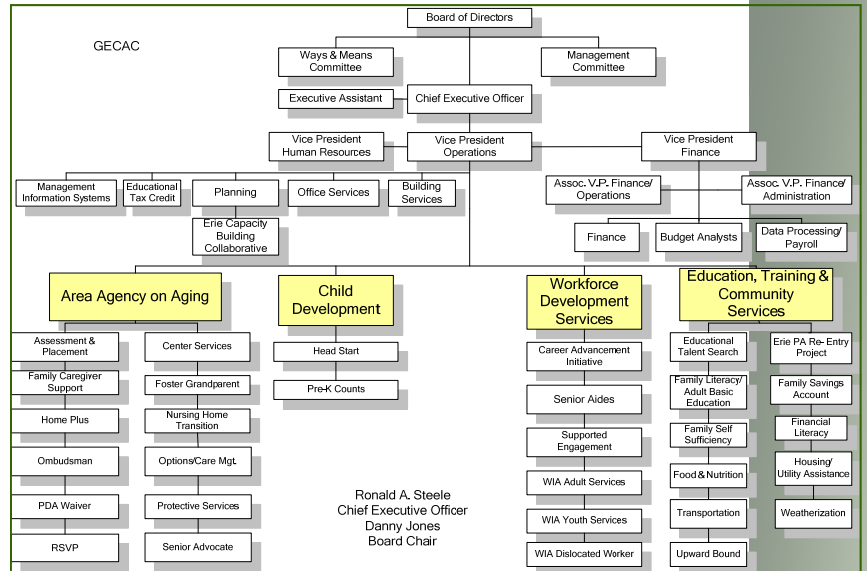
Children receiving Dental Exams..... 850 (96%)

Children diagnosed with a Disability142

Community members/ Parents participating in
the program 1043

Children prepared for Kindergarten 496





Organizational Charts



Head Start

Locations

Albion Head Start

John Williams Avenue; Albion, PA

Corry Head Start

101 North Center Street; Corry, PA

First United Methodist Church

42 East High Street; Union City, PA

Girard Head Start

2556 Maple Street; Lake City, PA

Harbor Homes

1839 East 18th Street; Erie, PA

Holy Rosary

1012 East 28th Street; Erie, PA

John Horan Center

703 Tacoma Road; Erie, PA

Lake City Dwellings

315 East 16th Street; Erie, PA

Luther Memorial

225 West 10th Street; Erie, PA

Millcreek Head Start

3902 West 38th Street; Erie, PA

R. Benjamin Wiley Learning Center

1006 West 10th Street; Erie, PA

Shiloh Baptist Church

909 East 5th Street; Erie, PA

St. Benedict Education Center

330 East 10th Street; Erie, PA

St. Matthews

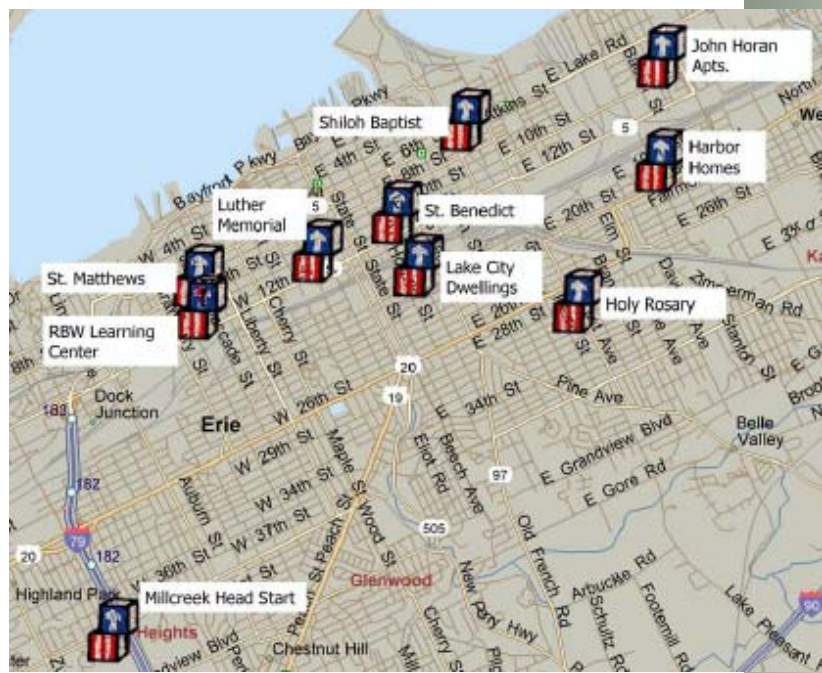
950 West 7th Street; Erie, PA

St. Peter's Lutheran Church

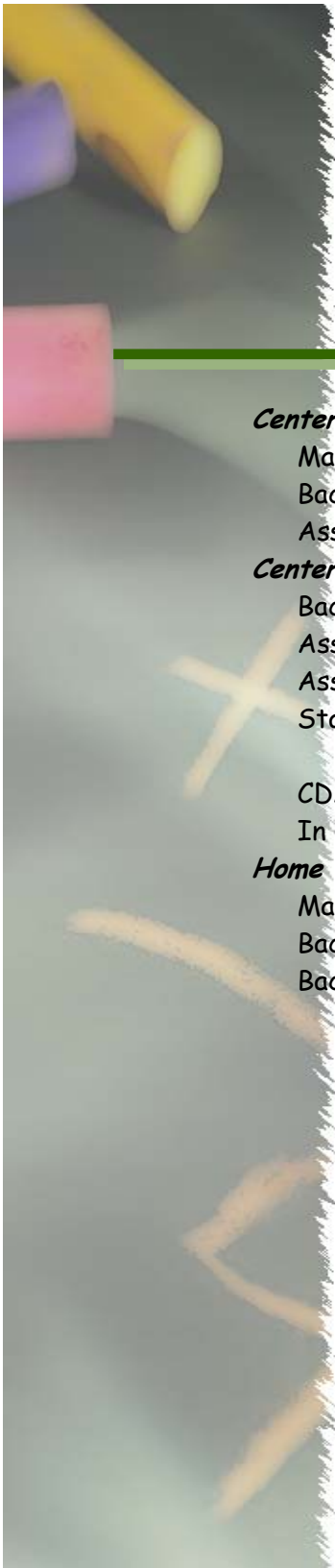
1500 Freeport Road; North East, PA

Wattsburg

9771 School House Drive; Wattsburg, PA



Head Start Locations



Staff Complement

Center-Based Teachers—45

Masters with certification	5
Bachelors with certification	35
Associates with CDA	5

Center-Based Teacher Assistants/Aides—53

Bachelors	1
Associates with CDA	14
Associates	4
State Private Academic Certificate—	
Nursery/ Kindergarten & CDA	1
CDA	5
In CDA training.....	28

Home Visitors—7

Masters.....	1
Bachelors with certification	4
Bachelors	2



Parent Meetings.....	153
Parent Education Activities	153
Policy Council Meetings.....	30
Health Service Advisory Meetings.....	4
PHSA Conference/ Training	2
NHSA Conference/ Training	2
Exploring Parenting Training.....	4
Male Involvement Day.....	17
Red and White Dinner	
Dad's Night Out	
Ladies Night Out	
Volunteer Recognition Banquet	
Hey Mom and Dad Look What I Can Do!	
Milk and Cookies with Dad	

Parent Involvement Activities



Head Start Revenue

Funding	Federal	State	Local	Total
Dept of HHS/ ACF	\$6,124,239			\$6,124,239
PA Dept. of Welfare		\$78,540		\$78,540
PA Dept. of Education		\$529,536	\$180,781	\$710,317
Fees/ Donation			\$85,000	\$85,000
Erie County			\$19,635	\$19,635
In-Kind			\$1,507,310	\$1,507,310
Total	\$6,124,239	\$608,076	\$1,792,726	\$8,525,041

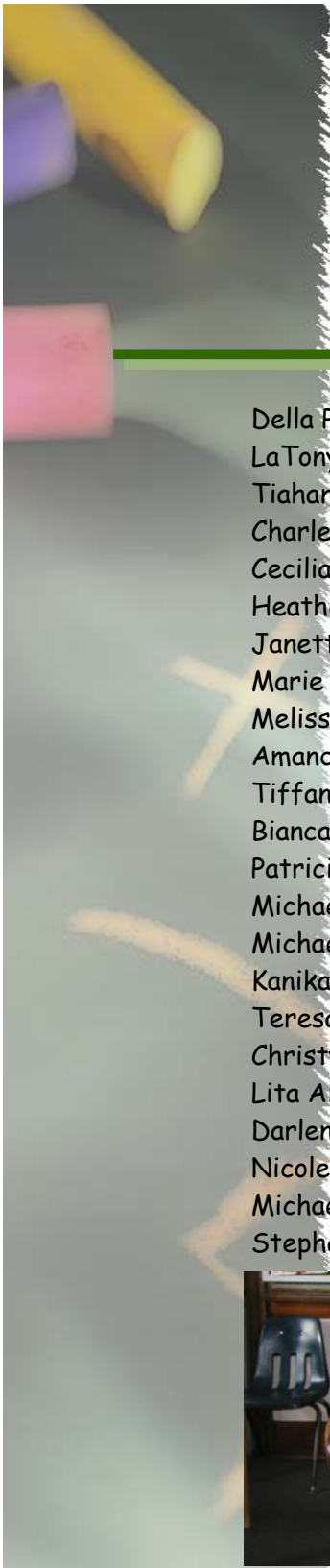




Category	Proposed	Actual
Total Expenditure	\$8,525,041.00	\$8,149,771.40
Personnel	\$5,017,390.00	\$4,654,523.06
Contractual	\$82,115.00	\$129,129.69
Travel	\$38,604.00	\$28,493.52
Supplies	\$82,672.00	\$141,973.96
Other	\$1,776,336.00	\$2,036,967.80
Training	\$20,614.00	\$20,442.61
Total Cash Expenditure	\$7,017,731.00	\$7,011,530.64
<i>Total In-Kind</i>	<i>\$1,507,310.00</i>	<i>\$1,114,567.85</i>
Total Head Start Budget	\$8,525,041.00	\$8,126,098.49

Head Start

Budget



Policy Council

Members

Della Presley, Chair...Community At Large (CAL)
LaTonya Davis, Vice-Chair.....CAL
Tiahana Martinez, Treasurer St. Martin
Charlene Bimber, Treasurer.....Corry
Cecilia Manus, SecretaryHarbor Homes
Heather Kahala Albion
Janette Dougan.....Holy Rosary
Marie JacksonHoly Rosary
Melissa Holloway.....Luther Memorial
Amanda FarrowLuther Memorial
Tiffanie Nielson.....RBW Learning Ctr.
Bianca Bramblette.....RBW Learning Ctr.
Patricia Bailey..... Shiloh
Michael Tibbens.....JHGA
Michael Ford..... St. Benedict's
Kanika Allen..... St. Benedict's
Teresa Sliker St. Benedict's
Christy Casler.....St. Matthew's
Lita AlsaediMillcreek
Darlene SmithCAL
Nicole Nicholson Wattsburg
Michael Butler.....GECAC Board Rep.
Stephanie McKnightGirard



Center Parent Committee Chairpersons

<i>Albion</i>	Marcie Valetta
<i>Corry</i>	Julie Warner
<i>Girard</i>	Demi Baker
<i>Harbor Homes</i>	Michelle Jones
<i>Holy Rosary</i>	Michelle Wadsworth
<i>J. Horan Apts.</i>	Suzanne Tibbens
<i>Lake City Dwellings</i>	Belinda Lucas
<i>Luther Memorial</i>	Amanda Farrow
<i>North East</i>	Heather Muscarella
<i>RBW Learning Ctr.</i>	Rian Moore
<i>St. Benedict 1</i>	Alina Komis
<i>St. Benedict 2</i>	Chestina Johnson
<i>Shiloh</i>	Becky Gonzalez
<i>St. Martin</i>	Sarita Tolbert
<i>St. Matthew</i>	Clara Holman
<i>Union City</i>	Amy Hamrick
<i>Wattsburg</i>	Vickie Burwell

Health & Social

Service Advisory Com.

Kris Balinski	Connie Mohr
Michael Cox	Heidi Hellman
Rachael Henderson	Ed Forget
Samantha Canaan	Michelle Evans
Nicole Spears	
Maria Rosaro-Husband	



GECAC Board Members

Danny Jones, Chair
Homer Smith, Jr., Vice Chair
Gwendolyn White, Secretary
Christine Konzal, Treasurer
Stephen Danch
Della Presley
Pasquale J. Bruno, III
Michael Butler
Chanel M. Cook
Dr. Eron DeLeon Soto
Patrice Mitchell
Brenda McWilliams
Rev. Eugene Schoolfield, II
Mary Timashenka

Head Start Management Staff

Anne Prince	Director
Wendy Wojtecki	Assistant Director
Brenda Nielsen	Family & Community
Carol Cronin	Education
Sunny Sevy	Parent Involvement
Mae Roberts	Health
Kathleen Woodard	Disability